

---

# Climate and Nature Strategy Update

Sustainability PDS Panel working session  
26<sup>th</sup> March 2026

---

Bath & North East  
Somerset Council

---

Improving People's Lives



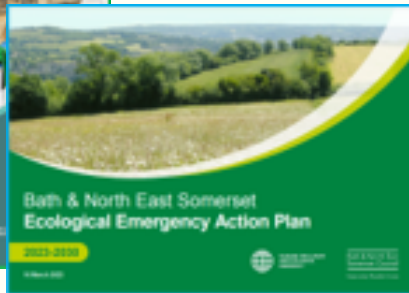
# Agenda

- 1. Introduction**
- 2. Context and inspiration to the collective challenge**
  1. Video excerpts from the National Emergency Briefing
  2. Future Ambition Board civic partnership working - Dan Green, Group Sustainability Director, YTL/Wessex Water
- 3. Examine proposed outline of the Climate & Nature Strategy**
  1. Feedback from the Panel on the sources, outline and framework for the strategy
- 4. Examine the proposed people-focused elements of the C&N Strategy**
  1. Feedback from the Panel as to how the strategy should empower communities and businesses, enable the right jobs and skills and support the most vulnerable, during and beyond the current transitions
- 5. Additional: Seeking the Panel's view of the recent Bristol City Council Climate Action Plan 'What Can I Do?' section**

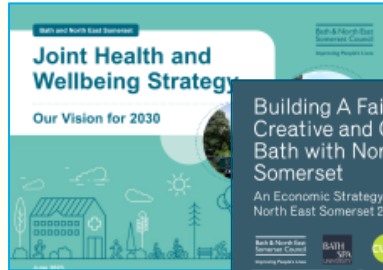
# The 2026 Climate and Nature Strategy brings together existing B&NES strategies and plans at the strategy mid point to 2030



Climate Emergency Strategy 2019-2030



Ecological Emergency Action Plan 2023-2030



Joint Health and Wellbeing Strategy to 2030

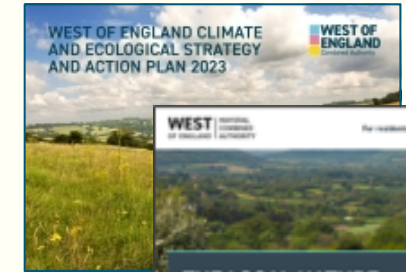


Economic Strategy 2024-2034



Input into the West of England:

1. Growth Strategy 2025
2. Climate and Ecological Emergency Strategy and Action Plan 2023
3. Local Nature Recovery Strategy 2024



Greener Places Plan 2025 to 2035

Greener Places Plan 2025-2035



Annual Climate & Nature Progress Reports (Autumn)  
*(Plus annual CDP disclosure)*

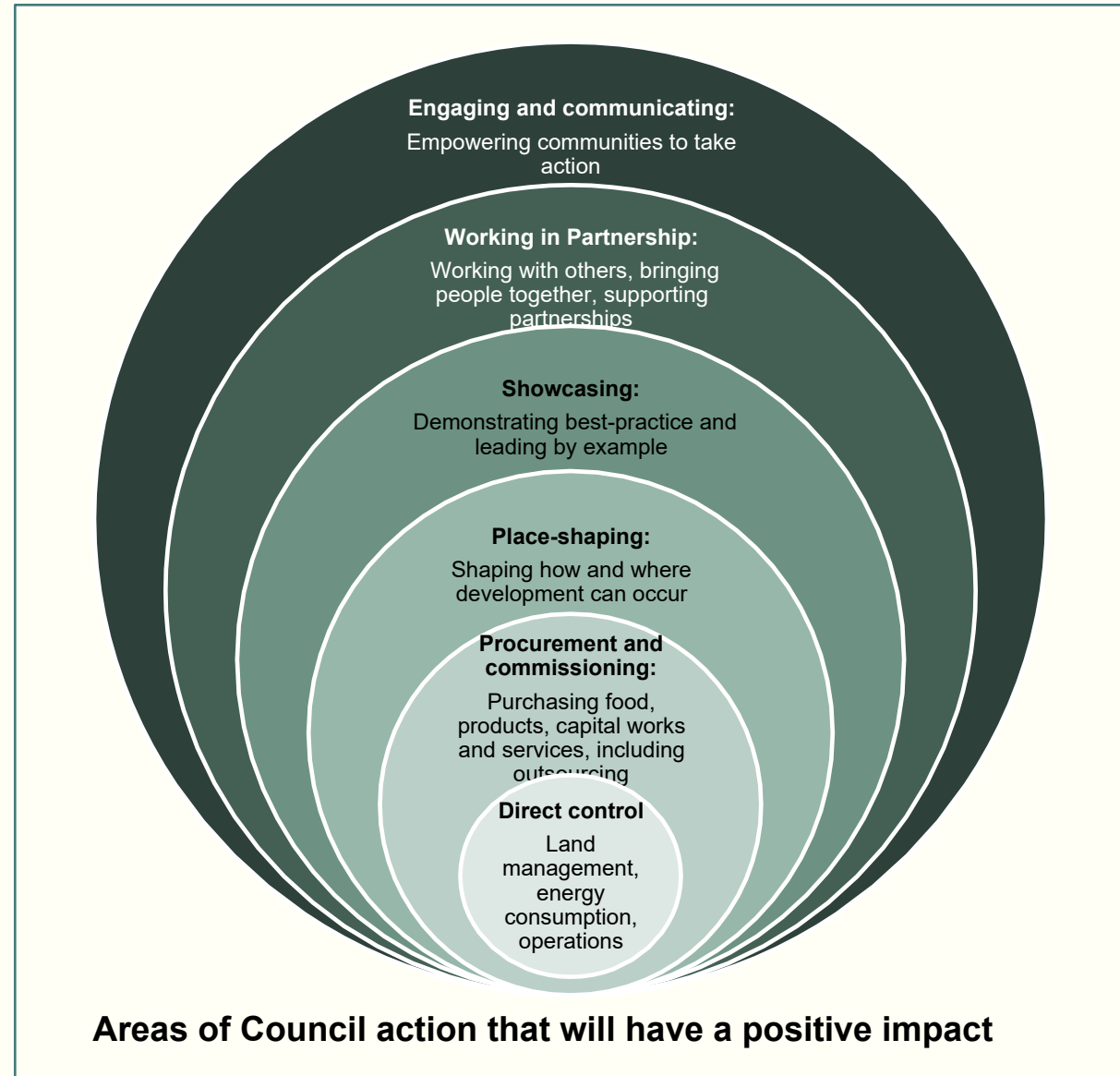


B&NES Climate and Ecological publications cover both B&NES Council action and the wider Bath and North East Somerset District.

The council has made its commitment to address the emergencies, most recently set out in the 2023-2027 Corporate Strategy.

# B&NES Council has a key role to play to enable progress towards the emergencies

The Council will also rely on partnership working for successful delivery, for example from the Future Ambition Board civic partners, the many climate and nature groups working within the district and established regional partnerships such as the West of England Nature Partnership.

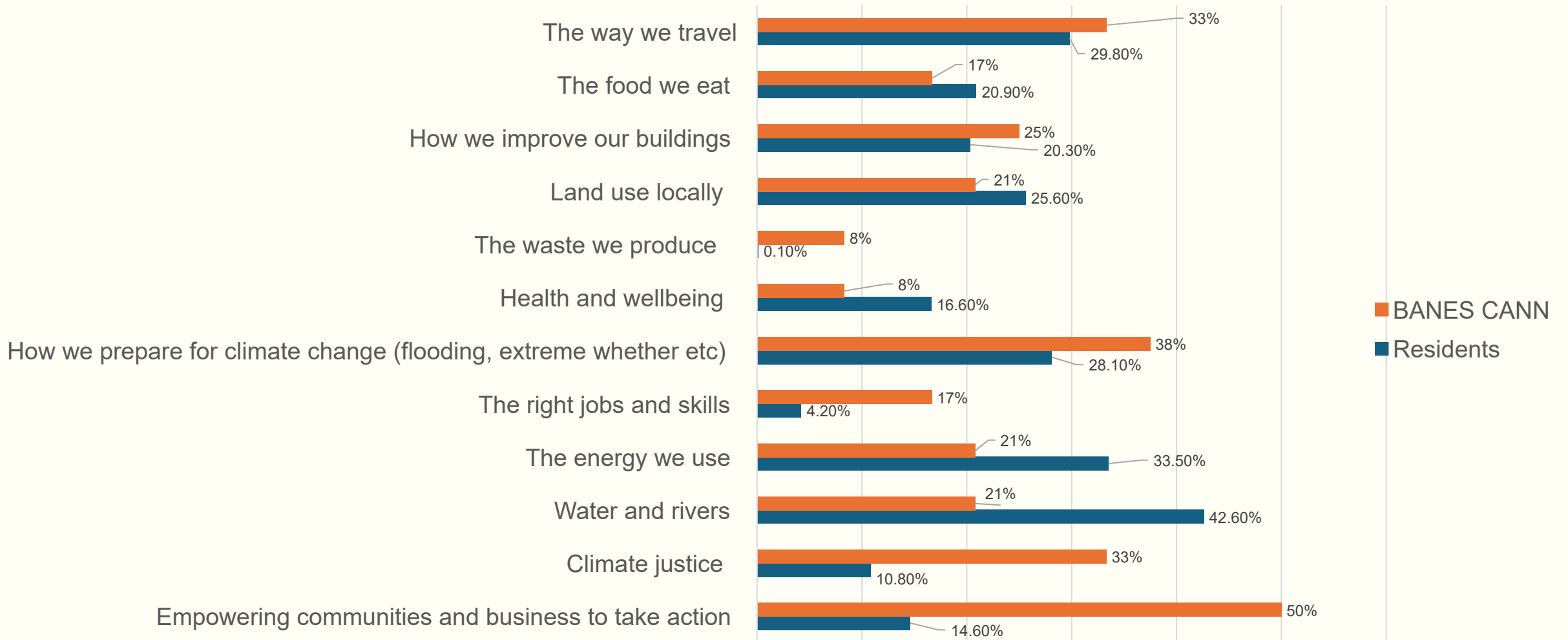


# Key sources used in developing the high-level strategy framework

- Lewes Council Climate and Nature Strategy – as highlighted by the LGA and Friends of the Earth
- Newham Council Climate Transition Plan – as highlighted by the LGA and UK100
- The Climate Action Scorecard framework – external benchmarking of Local Authorities every 18 months. B&NES currently 17th of Single Teir authorities – the first non-major city or London borough
- Bristol climate transition plan analysis – utilising software ClimateView that B&NES is using from Jan 2026 and Bristol City Council Climate Action Plan 2026-2028.
- The 7th Carbon Budget report and focus
- UK's 3rd independent Climate Change Risk Assessment (CCRA3-IA), Climate Change Committee 2022 (4th assessment due to be published mid-2026)
- Met Office Local Climate Service report for Bath and North East Somerset
- West of England Local Nature Recovery Strategy
- West of England Climate Adaptation Report (ARP4) 2025
- Doughnut Economics Action Lab
- City of Bristol Just Transition declaration
- The Well-being of Future Generations Act, Wales 2015
- 'Climate change and social justice: an evidence review', Joseph Rowntree Foundation
- B&NES existing strategies and plans including the Health & Wellbeing Strategy and the Economic Strategy
- West of England Combined Authority strategies and plans including the Growth Strategy

# Feedback from our communities during 2025

2025 BANES Climate and Nature Network (CANN) Forum vs Resident survey priorities, sorted by smallest difference. This shows areas where the Forum attendees and Residents are most aligned



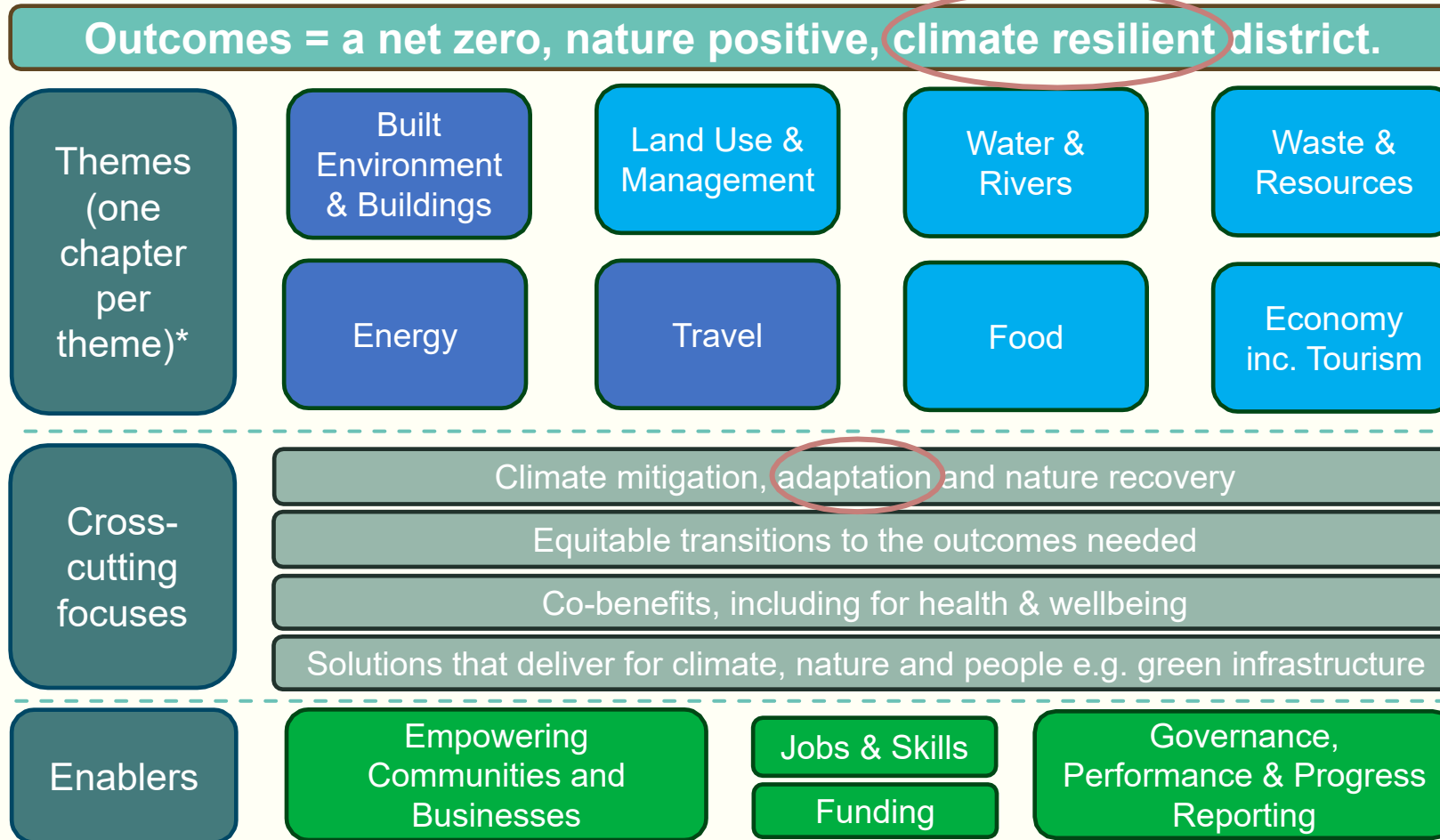


## Questions:

1. Are there any further sources that Officers should consider to cross reference against the draft strategy outline?

# The Strategy will set out what the Council and partners can each deliver, enable and influence across Bath and North East Somerset

## Strategy Outline



### Key

New vs 2019/2020

New vs 2019/20

\* Council Operations to be incorporated within each theme, splitting the content and actions by what the council should deliver for its own operations, and where it can enable and influence the district e.g. via policy, place-based work, convening, funded projects or information sharing



## Questions:

1. Are there any recommendations (feedback) as to how to improve the draft strategy outline?

---

## The strategy framework includes:

Principles

that underpin the strategy

'Futures'

statements about the resilient district we are working to create against each theme

Big Shifts

needed to deliver these Futures from a Climate and Nature perspective e.g. electrify energy

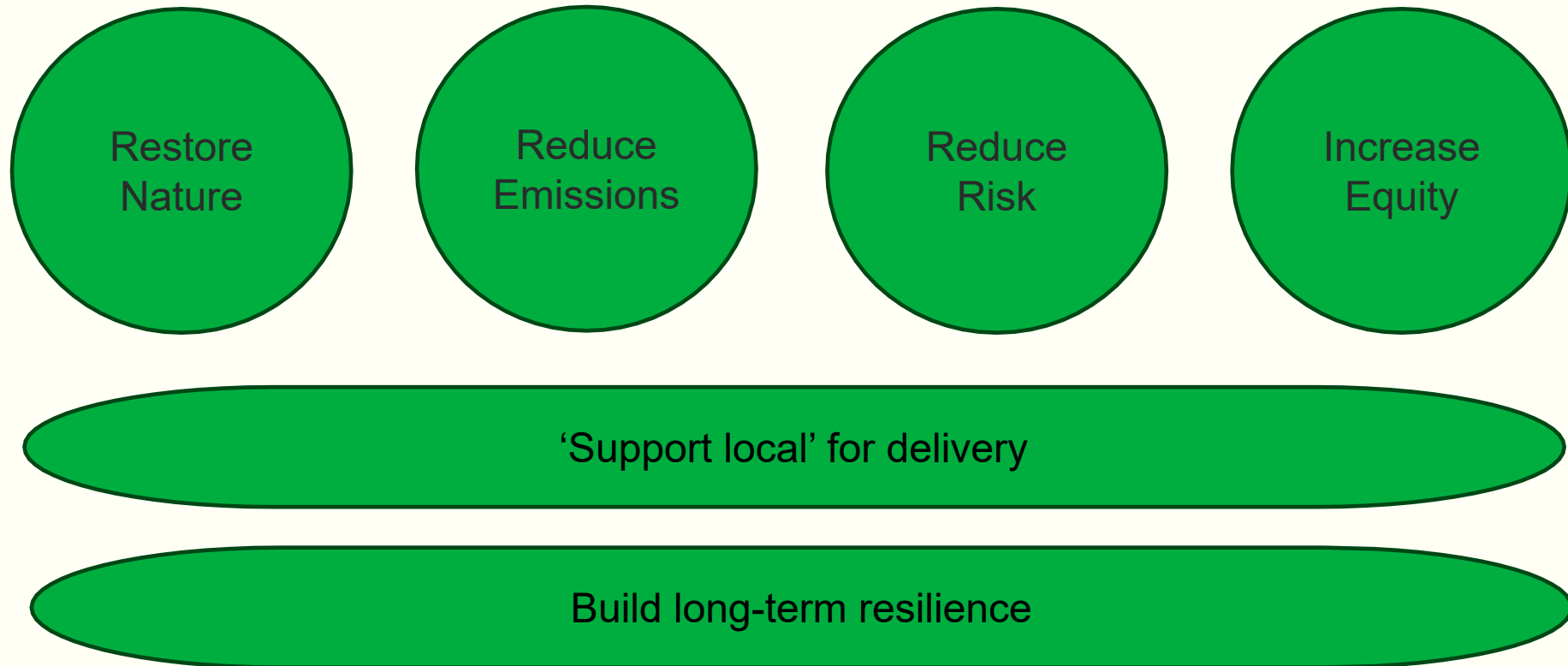
Enablers

that will help ensure robust delivery

---

## Draft Strategy Principles.

The Strategy will work to:



# What are the 'Futures' we want to see?



1. Our homes, workplaces and schools are comfortable, healthy and energy efficient



2. The electricity we use is renewable, reliable and affordable



3. We prefer to walk, cycle, or use public transport and goods are safely moved without polluting our streets



4. Sharing, buying & wasting less is our normal



5. We eat well and sustainably



6. Our neighbourhoods and local economy is resilient, connected and green



7. Wildlife is thriving



8. Our rivers and streams are clean and full of life

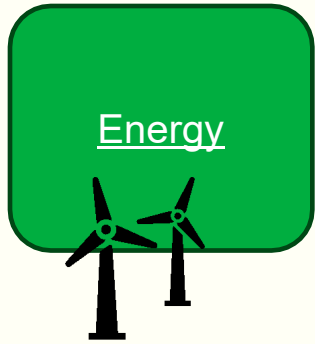


9. We are resilient to the impacts of a changing climate, including increased flooding, extreme heat and drought



10. How we live and work reduces the impacts we have beyond our borders

# What are the 'Big Shifts' needed to deliver these 'Futures'?

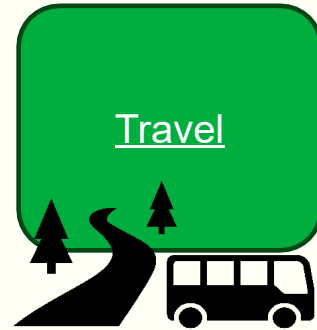


## We need to electrify Energy

We need to become **renewable energy powered and increasingly efficient**, with local & regional sources supporting our needs to contribute to national energy security



Our built environment must become **future-proofed** and **fossil-fuel free**, while **supporting nature recovery**.



## We need to electrify Travel

**New infrastructure** needs to be climate resilient and support better public transport, more active travel and nature recovery.

Our **vehicles are replaced with electric ones** and are charged with renewable energy.



We need to **significantly reduce pollution** into our rivers and streams

We need to **slow the flow of water** throughout the landscape using natural solutions and **reduce water consumption to increase our resilience**



We need to use our land more smartly and efficiently to **create more space for nature and adapt to climate change**, while providing sustainable food security.

How we adapt and use our land is key for **building local resilience**



We need to **lower our consumption** and get used to re-using, sharing and mending, wasting less.

Our **local economy will become more resilient** and shift towards lower impact supply chains & activities.



**What we eat can significantly reduce impacts** on nature and lowers emissions. We know and act on this.



# What are our enablers

1. Targeting and increasing investment, including through innovative partnerships and national support\*
2. Partnering with our Anchor Institutions
3. Enabling individual, community, civic and place-based action - through and throughout our communities
4. Collaborating beyond B&NES' borders, whilst retaining our principle of support for local delivery
5. Growing our district's climate and nature action capacity and effectiveness
6. Focusing on nature-based solutions that deliver for both climate and nature
7. Focusing on enabling the right skills and jobs

*\* Climate and nature action remains a non-statutory area for Local Authorities, limiting investment from current budgets*



## Questions:

1. Does the above framework capture the feedback that the Panel receives in its role as Elected Members as to what is needed to deliver a long-term resilient Bath and North East Somerset in which everyone thrives?
2. Are there any recommendations (feedback) from the Panel as to how to improve this framework?

# What are the 'Futures' we want to see?



1. Our homes, workplaces and schools are comfortable, healthy and energy efficient



2. The electricity we use is renewable, reliable and affordable



3. We prefer to walk, cycle, or use public transport and goods are safely moved without polluting our streets



4. Sharing, buying & wasting less is our normal



5. We eat well and sustainably



6. Our neighbourhoods and local economy is resilient, connected and green



7. Wildlife is thriving



8. Our rivers and streams are clean and full of life



9. We are resilient to the impacts of a changing climate, including increased flooding, extreme heat and drought



10. How we live and work reduces the impacts we have beyond our borders



## Questions:

The panel is invited to provide recommendations (feedback) as to how to ensure the combined Climate and Nature Strategy focuses on the most impactful ways to deliver community and resident-focused aspects of the draft outline:

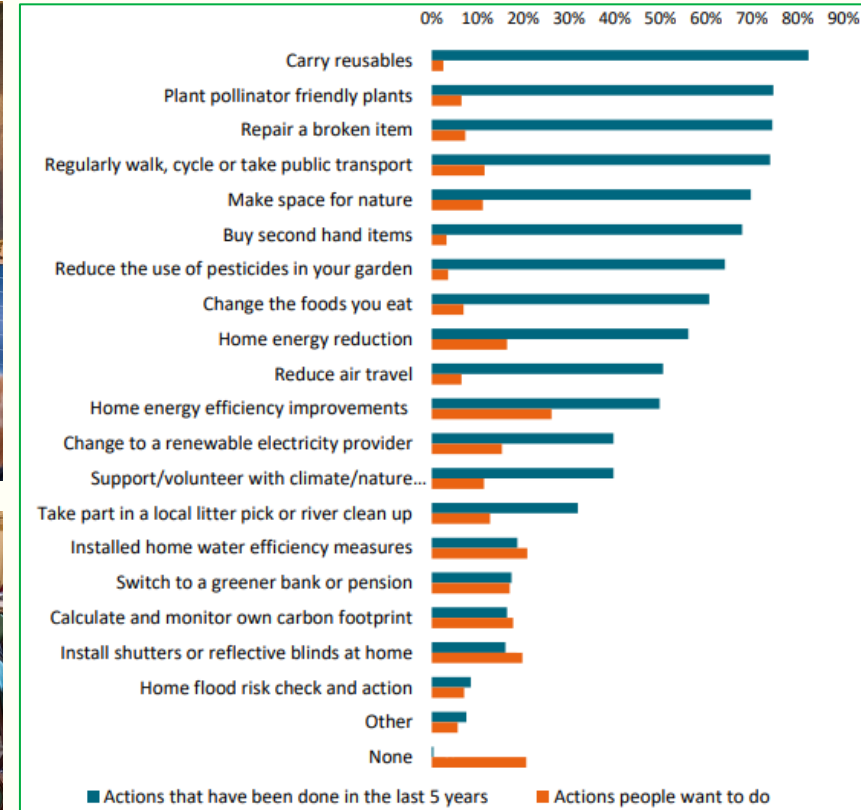
- Empowering communities and businesses
- Enabling the right jobs and skills
- Supporting the most vulnerable, during and beyond the current transitions

# Empowering communities to go even further

- Bath and North East Somerset already has long-standing, highly motivated communities acting for climate, nature, adaptation and long-term resilience who want to go further
- Feedback to date for the strategy from resident communities has cited having places and ways to come together locally is key to co-ordinate action for climate and nature, as well as to build community
- Bath and North East Somerset has two local communities taking part in the Bristol Climate and Nature Partnership's Community Climate and Nature Action Project to develop community climate action plans - Twerton & Whiteway Community Network and Bath Mind



Climate and Nature Network Forum, November 2025, attended by 171 people



Top 10 actions taken in the last 5 years and the Top 10 actions residents would like to take but currently cannot or do not  
*Resident Climate and Nature Survey, Summer 2025, 833 responses*

# Enabling the right jobs and skills

- The Council will continue to work with organisations representing the business community, including via the civic Future Ambition Board that includes Bath BID and Business West
- To date, the Council has promoted WECA's free carbon surveys for SMEs and Green Business grants to help businesses invest in improving the energy efficiency of their premises.
  - While Green Business Grants finished in October 2025, Low Carbon Surveys will continue to be available. B&NES Council's Carbon Reduction Accelerator scheme remains live; there will be a continuation of the social enterprise support programme and officers will work with WECA on new green grant schemes for businesses.
- Enabling the right jobs and skills is a multi-faceted challenge because of the wide range of jobs and skills that are critical to the delivery of mitigation and adaptation in relation to the climate and nature emergencies.
  - A clear definition of green skills is needed to make sure that all valuable jobs and skills are visible and supported. It will be important to build capacity in B&NES and regionally to train these skills for which capital and physical space will be key.

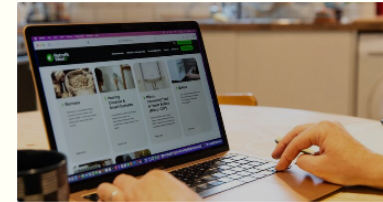
## West of England Growth Hub, Green Business Support



Carbon Surveys



Green Business Grants



Retrofit West



Nature and Business Resources



### Green Jobs and Skills

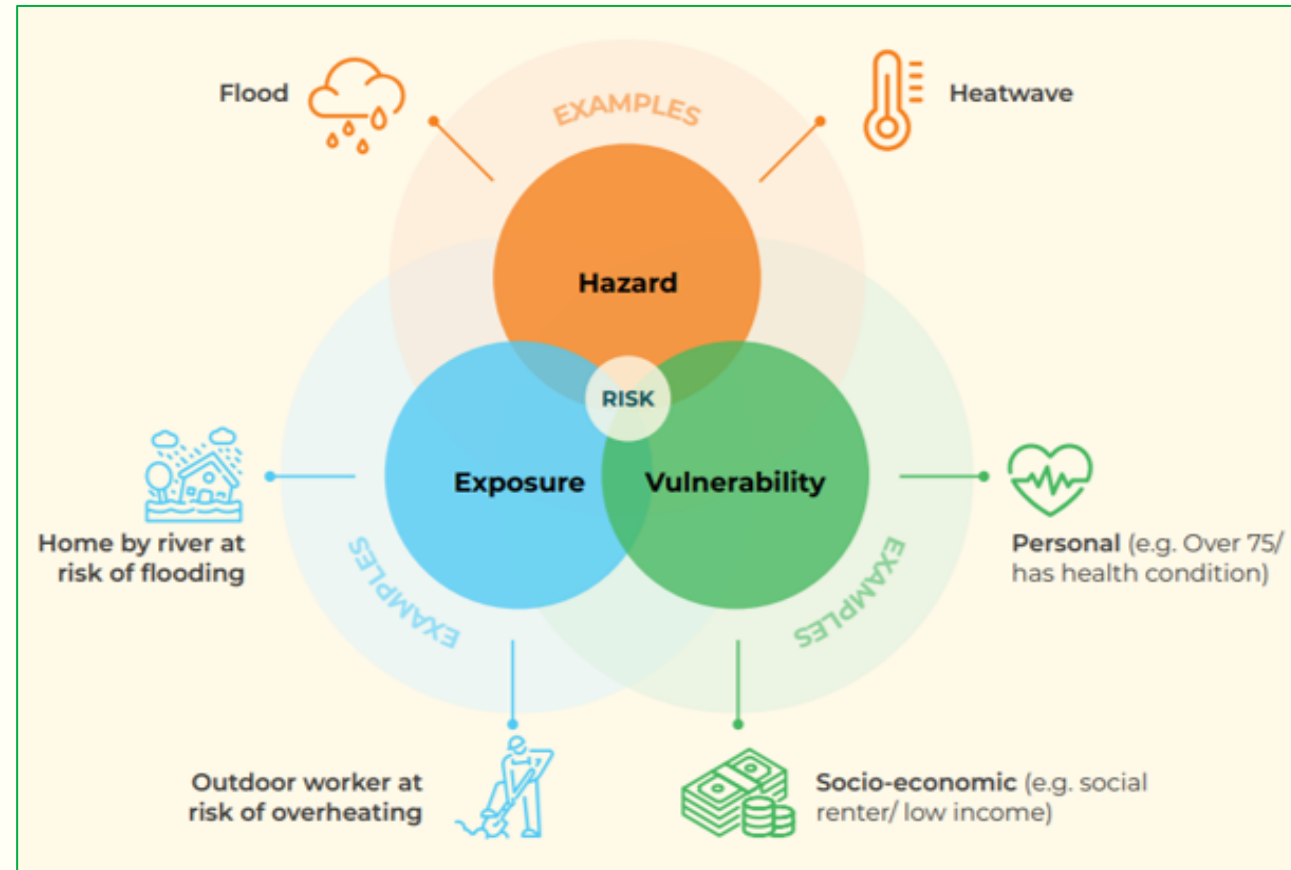
- Manufacturing
- Environmental Management
- Land management
- Entrepreneurship
- Teaching
- Home upgrade engineers
- Agriculture
- Construction & Transport
- Conservation
- Growing & food production
- Waste & Environment



# Supporting the most vulnerable, during and beyond the current transitions

- Climate impacts can affect anyone, but certain groups have the potential to be more affected than others.
- Climate risk and potential for impact depends on three key factors: hazard, exposure, and vulnerability.
- Climate risks intersect with existing health and social inequalities, and people and groups experiencing multiple inequalities are most vulnerable.
- Climate injustice also presents itself in several other ways:
  - Disadvantaged groups contribute least to causing climate change yet are likely to be most affected by its impacts
  - Disadvantaged groups are often underrepresented in decision making
  - Lower income groups tend to pay proportionally more towards implementing climate policies while benefiting least from them

Sources: Joseph Rowntree Foundation; Climate Just



Local Climate Adaptation Tool (LCAT) <https://lcat.uk/>



## Questions:

The panel is invited to provide recommendations (feedback) as to how to ensure the combined Climate and Nature Strategy focuses on the most impactful ways to deliver community and resident-focused aspects of the draft outline:

- Empowering communities and businesses
- Enabling the right jobs and skills
- Supporting the most vulnerable, during and beyond the current transitions



## Questions:

The recently-published [Bristol City Council Climate Action Plan 2026-28](#) encourages citizens to take individual action.

It is the case that wider society, including businesses and governments, must make a very significant contribution to tackling the climate and nature emergencies and be acting first.

Where it comes to citizen contributions, Officers would be keen to understand from the Panel their views on this new Climate Action Plan's focus for citizens, for consistency at regional level.

# **Bristol City Council Climate Action Plan – What Can I Do Section**

One of the best ways to get ideas and inspiration for climate action is from people just like us. [Bristol Climate Hub](#) has stories from people right across Bristol, from all walks of life. If you can't access the Hub website, here's a list of the most impactful actions to aim for – choose what's appropriate for you. For example, if your close friends and family live on another continent, your decision on flying will be different from someone taking lots of city breaks each year.

- Switching to living without a car - use public transport, walk, wheel or cycle instead
- Reducing flying
- Engage in your city – supporting local businesses instead of big online retailers, using your library and other local facilities, joining together in collective action like the Community Climate and Nature Action project
- Refurbishment and renovation of your home to reduce your energy use and switching to a heat pump instead of a gas boiler. Good places to look for help with this in Bristol are the Bright Green Homes programme and Retrofit West or for general advice visit the Energy Saving Trust
- Buying fewer things new (like clothes and electrical and electronic goods) - and making the things you buy last longer
- Don't believe misinformation, such as about the effectiveness of climate actions, or about reduced concern for climate change, and counter misinformation when you safely can
- Eating less meat and fewer dairy products, using the money saved to support local farmers by buying their products

Source: [Bristol City Council Climate Action Plan 2026-28 \(page 23\)](#)



# Timeline

The strategy development timeline includes:

- **March:** Climate Emergency and Sustainability Policy Development & Scrutiny Panel
- **May/June:** wider engagement to prioritise contents, action and funding feasibility
- **July/August:** Climate Resilient Council (adaptation) update is an agenda item at July Climate Emergency and Sustainability Policy Development & Scrutiny Panel. Draft collated and finalised.
- **September:** Climate Emergency and Sustainability Policy Development & Scrutiny Panel before October document design
- **November:** Cabinet, Council and publication